

DESIGN & DETAIL

**iw**



NEW PROJECT  
THEME : CHILDREN'S SPACE vol.

**149**



## Blaucel Kindergarten

Design MARGA NOTGER ([www.mnotger.com](http://www.mnotger.com))  
Location Mallorca, Islas Baleares, Spain  
Built Area 600m<sup>2</sup>  
Construction CES BLAUCEL  
Photography Gon Salva  
Editor Kim Gu-rang

010 9171 871  
010 2480 78180 78180 78180 78180  
010 9000  
010 248 010  
010 248 010  
010 248 010

**Blaucel**  
ESCOLETA

Viewed from the entrance



Office viewed from the hall



- 1. Hall
- 2. Office
- 3. Classroom
- 4. Toilet
- 5. Sleeping room
- 6. Psychomotor classroom & dining room
- 7. Kitchen
- 8. Terrace
- 9. Playground



Floor plan



Play room



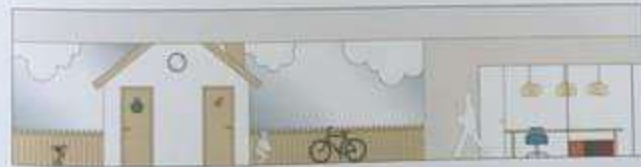
Dining room



Toilet



Play room



Exterior

Thinking about stimulating psychomotor activities...



Entrance of psychomotor classroom



Patio



Psychomotor classroom

During the interior design project of Blauzal Kindergarten, we have tried to fully satisfy all their needs. The inspiration of this project has a close relationship with the logo. We have created an imaginary world, where children come into the world of "Celeta", logo's girl. When children come in the kindergarten they find, at the entrance, a minimalist swing, like a playground in a city, with cushions hand painted by them. Walking along the corridor that seems a street, they see wooden fences and two houses, where each door is a different classroom. Also the columns look like trees in this imaginary world. Classrooms are separated with transparent glass, giving more sense of space and increasing natural light that comes in through the patio and the main entrance. Thinking about children's drawings, where they paint trees, clouds, houses, cats...we designed the space.

The space is divided in two different areas: children's area and services. Children's area includes all classrooms and the patio. Services area consists in management office, kitchen and toilet. Each classroom has been designed according to the needs of each age. **Psychomotor classroom and dining zone:** This is the place with more activity of all the kindergarten. Children perform psychomotor and stimulating activities, together with a little reading area, communicated with the dining room, to offer an open

space in case of need. **Patio:** An open space with three different areas where children have play zone, snack area and a place to grow plants and vegetables. It becomes in a suggestive and stimulating area. Ceiling are made with plasterboard and acoustic panels, to minimize the noise of children. In each classroom there is a circle painted each one in a different color so they can distinguish their class from the corridor. All carpentry is in natural pine wood and white matt panels.

수업에 올 '슈미'를 대상으로 하는 블라우잘 유치원만 로고에 등장하는 '블라우잘'라는 캐릭터를 주인공으로 디자인하여 여러 동화 속 세계에 온 듯 흥미로운 공간을 선보이고 있다. 출입구에 들어서서 마주치는 높은 벽면에 나무 울타리와 차터터 표고를 대충 그렸던 그 네 벽자를 뒤에 천공판을 천공하고 있다. 내부 공간은 크게 교실, 테라스가 있는 어린이 구역과 사무실, 식사 공간, 휴식, 화장실로 구분된 세로로 나뉘어진다. 교실은 어린이들이 나이에 따라 연령의 선으로 나누어진다. 나무, 구름, 집, 고깔이 들어 있어 대충 한 장과 우리 벽화로 개성있고 풍부한 차원을 주어 어린의 공간을 채워주고 있다. 또한, 천공판 벽과 바닥의 방음판으로 마감하여 소음을 최소화하고, 교실마다 다른 색상의 동그라미를 적용하여 벽에서 눈을 쉽게 구별할 수 있도록 했으며 손쉬운 청소와 장생유체판으로 만들었던 가구 및 소품들을 통해 공간을 친숙하게 꾸며주고 있다. 여기서 아늑한, 자유로운 게 특징인 수 있는 블라우잘 함께 생활과 레슨을 가질 수 있는 방법을 마련하여 아이들의 모습을 자극하는 자연 친화적이고 유쾌한 공간이 되고 있다.